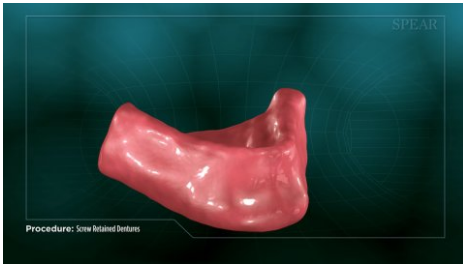


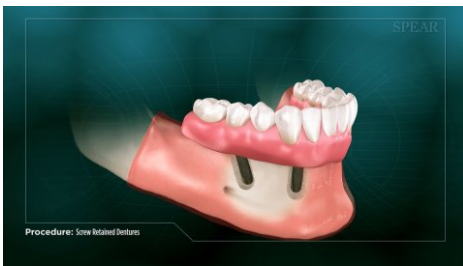
# Screw Retained Dentures

**Dr. Robert  
LaCarrubba**

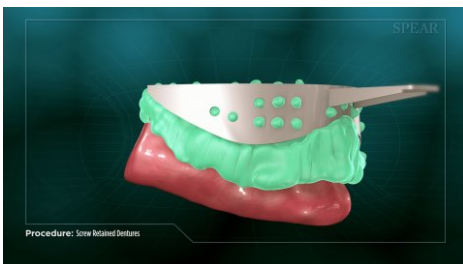
5927 Main St  
Amherst, NY 14226  
(716) 631-2728



For patients requiring replacement of all teeth in the upper and/or lower arch of the mouth, screw retained dentures with dental implants are an excellent treatment option. They improve your appearance by replacing your missing teeth while providing improved overall function for eating and speech, with the added stability of a fixed restoration thanks to the use of implants. It will require multiple appointments for your doctor to place the dental implants and design your dentures.



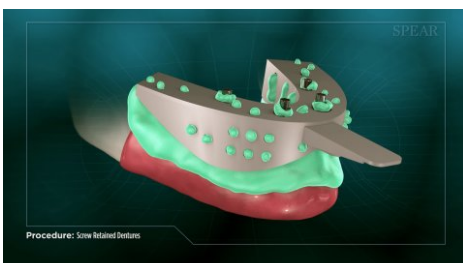
Screw retained dentures are a prosthesis placed in the mouth containing replacement teeth, mounted in a base made of pink resin formed over a metal structure to create an exact fit over your existing gums. They are secured in place using dental implants, which are artificial roots placed into the supporting bone. Utilizing implants not only provides a solid foundation for the denture teeth allowing for optimal eating and speaking, but also helps to preserve the surrounding bone from shrinking over time without a tooth root structure to support it.



The first step in this process is to take an impression of the area, which your doctor will use to create a set of temporary dentures for you. When the temporary dentures are completed, diagnostic images are taken of the area to plan out the placement of your dental implants.



Next, the area is prepared and your dental implants are placed. If your doctor feels that the implants are stable enough to handle the force of biting, abutments will be secured into the implants and the temporary dentures will be secured to the abutments. At subsequent visits your dentist will monitor the healing process, letting you know when the area is ready for the next phase of treatment.



Once your implants have fully healed, your doctor will take new impressions of your mouth. These impressions will be used to create your final dentures.



During follow up appointments, your doctor will check for proper fit and bite alignment of the final denture. It may require multiple incremental try-in fittings to ensure the best final result for you. Once all adjustments have been made, the final denture is fixed in place. With the process completed, you will have a restoration specially designed to replace your natural teeth in a way that greatly improves your appearance, while being securely fixed in place in a way that promotes optimal function when eating or speaking.